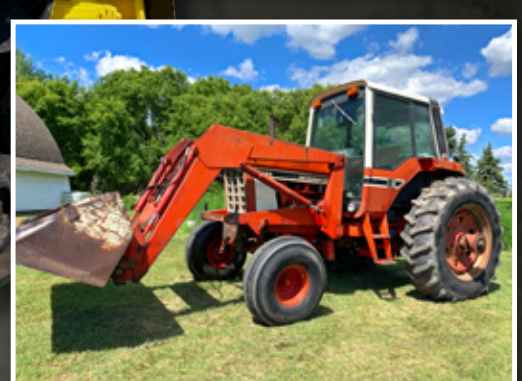


Farm Retirement 1526 210th St, Mahnomon, MN

AUCTION

THURSDAY, MARCH 25 | 10AM 2021

PREVIEW: By Appointment. | **LOADOUT:** Removal is two weeks from auction date. For loadout contact Dean Spaeth, 218.261.0612.
AUCTIONEER'S NOTE: Major equipment begins selling at 10:00 AM. Live online bidding available on major equipment.
 Registration, terms, & details at SteffesGroup.com



TRACK TRACTORS

2016 John Deere 9570RT, buddy seat, powershift, 5 hyd., return flow, HD swinging drawbar, Gen 4 10" armrest display, integrated auto steer, HID lights, 115 gal. high flow pump, idler weight set, (26) front suitcase weights, tow cable, 36" tracks, 1,029 hrs., update done to idlers, S/N1RW9570RJP915034
1987 Caterpillar 65, powershift, 3306 Cat engine, 4 hyd., track suspension, no brakes, 24" tracks, shows 1,541 hrs., S/N7YC00329

TRACTORS & LOADER

2002 Case-IH MX220, MFWD, buddy seat, powershift, 5 hyd., return flow, 3 pt., quick hitch, 540/1000/large 1000 PTO's, front weight bracket, 380/85R34 front tires, 380/90R50 rear duals, 6,527 hrs., S/NX2204C4JJA0117198
1983 Case-IH 2394, 2WD, powershift, 3 hyd., 3 pt., quick hitch, 1000 PTO, ext. front axle, (10) front suitcase weights, 14L-16.1 tires, 14.9-46 rear hub duals, A/C needs repair, 8,269 hrs., S/N9931163
1981 IHC 1086, 2WD, 8 spd., 3 hyd., 3 pt., 540/1000 PTO, w/quick tach loader, 8' bucket, 11.00-16 front tires, 18.4-38 rear tires, A/C needs repair, 9,431 hrs., S/N71880
Massey Ferguson 1155, 2WD, cab, 3 hyd., 6 spd., 540 PTO, 18.4-38 rear tires, 5,605 hrs., does not run

GPS EQUIPMENT

John Deere StarFire 3000 receiver, SF2, S/NPCGT3TA310891
John Deere StarFire 3000 receiver, S/N782075
(2) John Deere 2630 displays, AutoTrac, (1) 3,246 hrs., S/N352468
John Deere ITC receiver
(2) John Deere ATU steering wheels

HARVEST EQUIPMENT

2009 John Deere 9770, PRWD, Contour-Master, 5 spd. feeder house, single pt., CommandCenter armrest display, integrated auto steer, hopper ext., high cap. unloading auger, chopper, Kuchar concaves, John Deere round bar & wheat, filler plates for wheat & barley, 520/85R42 duals, 28L-26 rear tires, 1,851 sep. hrs., 2,529 engine hrs., S/NH09770S733035
2017 John Deere 635FD flex draper, 35', finger reel, fore/aft, dual sickle drive, single pt. hookup, S/N1H0635FDPH0795132
John Deere 930 flex head, 30', finger reel, fore/aft, crop dividers, S/NH00930F677162
2012 John Deere 612C chopping corn head, 12x22", AHH, RowSense, knife rolls, hyd. deck plates, (12) stalk stompers, single pt., stubble lights, S/N7H00612CECC746521
1996 John Deere 914 pickup head, 6-belt, wind suppressor, converted to single pt., S/NH00914N660221
John Deere 212 pickup head, 5-belt, wind suppressor, setup for 8820 combine, S/N376183
Parker CHC360 header trailer, 36', 4-wheel, 4-wheel steer, S/ND61190136
1993 V-Trailer Mfg. single axle header trailer, 30', 2-wheel

GRAIN CART

J&M 750 grain cart, 750 bu., 16" corner auger, roll tarp, 1000 PTO, sight glass, 18.4-46 tires, S/N4065

PLANTER

Wil-Rich PT-2200 planter, 24x22", MaxEmerge Plus, front fold, VacuMeter row units, ground drive, eSet meters, plumbed for liquid fert., adj. Yetter trash whippers, 3 bu. boxes, John Deere 250 monitor, hyd. folding markers, rubber closing wheels, soybean/sugarbeet plates, 7.50-20 transport tires, row units off John Deere 1730 planter

PRESS DRILLS

John Deere 9400 press drill, (4) 10' sections, 6" space, single compartment, factory hitch & transport, 2 seasons on new discs & bearings
John Deere 9350 press drill, (2) 10' drill sections, 6" space, dry fertilizer, black rubber packing wheels

TILLAGE EQUIPMENT

Salford I-4141 vertical tillage, 41', 3-section fold, (2) rows 22" discs, rear wave discs, rolling baskets, rubber cushion throughout, walking tandems across, heavy weight pkg., 3-bar harrow, 305/70R22.5 HD main frame tires, 245/70R19.5 wing tires, S/N131265
2012 Summers Super Coultter Plus vertical tillage, 40', 3-section fold, wave coulters, HD weight pkg., rock cushion, Summers 4-bar harrow, HD Goodyear 340/65R18 tires on main frame, 12.5L-15FL wing tires, S/NL1632
Mandako land roller, 50', 42" drum, 3-section, rear fold, S/NC07045086
2016 John Deere 2410 chisel plow, 42', 12" spacing, single pt. depth, walking tandems across,

TILLAGE EQUIPMENT

floating hitch, 4" carbide tips, 3-bar harrow, HD 280/70R15 tires on main frame, Firestone AD2 tires, S/N1N02410XCH0770050
Wil-Rich 3400 field cultivator, 56', 5-section, knock-on pts., walking tandems across, 4-bar harrow
John Deere 960 field cultivator, 41', 6" space, 3-section fold, walking tandems across, John Deere 3-bar harrow, S/NN00960X013421
Wil-Rich cultivator, 38', 3-section fold, needs repair
Western harrow, 56', 4-bar, converted from multiweeder
Alloway row crop cultivator, 12x22", 3 pt., shields

SPRAYERS/SPRAY TRAILER & SADDLE TANKS

Fast 9524 pull-type sprayer, 132" booms, 22" nozzle spacing, auto boom height, 2,400 gal. poly tank, 250 gal. poly rinse tank, 5 gal. clean water tank, 6-section shut-off, electric agitation shut-off, 3" fill, Hypro hyd. pump, Fast boom controller, Norac LG4 height controller, flow controller, hyd. ext. hitch, S/N9524E30190410
Summers pull-type sprayer, 90', 1,000 gal. tank, Hypro hyd. pump, 14.9-38 tires
1993 Road Systems single axle van body spray trailer, 28'x102", spring ride, roll-up door, (2) 1,500 gal. poly tanks, 15 gal. mix cone, 2" plumbing w/asst. hose, Honda GX160 gas pump 2 yrs. old, aluminum floor, rear pintle hitch, 285/75R24.5 low pro tires on steel rims, roll-up door does not work
Agri Products saddle tanks, 300 gal., poly, w/mounts off Case 245MX tractor, plumbed together, Hypro hyd. pump, 1" hose

SEMI TRACTORS

1998 Mack CH600 tandem axle day cab, E7-Mack engine, Eaton 9 spd., air ride, diff lock, wet kit, cruise, twin fuel tanks, heated mirrors, Saf-T-Pull, mud scrapers, 1/4 fenders, 11R22.5 tires on steel rims, 648,147 miles
1998 Mack CH613 tandem axle day cab, Mack E7-350, Eaton 9 spd., air ride, sliding 5th wheel, wet kit, cruise, twin aluminum fuel tanks, heated mirrors, Saf-T-Pull, mud scrapers, 285/75R24.5 tires on steel rims, engine brake needs work, 1,042,059 miles
1996 Mack CH613 tandem axle day cab, Mack E7-350, Eaton 15 spd., air ride, air slide 5th, diff lock, wet kit, cruise, twin aluminum fuel tanks, heated mirrors, Saf-T-Pull, mud scrapers, 1/4 fenders, 11R22.5 tires on steel rims, 400,322 actual miles

HOPPER BOTTOM TRAILERS

2011 Merritt tandem axle aluminum hopper bottom, 42'x96"x66", ag hoppers, air ride, air ride dump valve, Agri-Cover roll tarp, 11R22.5 tires on aluminum rims, steel inside rims
1988 Cornhusker tandem axle aluminum hopper bottom, spring ride, Shur-Co roll tarp, 24.5 low pro tires on steel rims

END DUMP TRAILERS

2003 Loadline tandem axle steel end dump trailer, 34', spring ride, steel floor, combo end gate, roll tarp, choker chains, mud scrapers, 11R24.5 tires on steel rims
1988 Shop-built tandem axle steel end dump trailer, 34', 62" sides, spring ride, beet gate, choker chains, mud scrapers, 11R22.5 low pro tires on steel rims

GRAIN HANDLING & AERATION EQUIPMENT

Brandt 5000EX grain vac, 7" tubes, full set flexible tubes w/extra, 1000 PTO, hyd. folding auger, clean up kit, extra screen, S/N86663
2008 Westfield MK130-91 Plus unloading auger, 91'x13", hyd. lift, electric hopper walker, 540 PTO, S/N194418
Westfield MK100-71 swing out auger, 71'x10", 540 PTO
Westfield W80-41 auger, 41'x8", no motor
Western Industries hyd. drill fill auger, plastic, folding
(3) Gold'n Air C16 aeration fans, Baldor 7-1/2 hp. motor, 1 phase
(2) Aeration fans, 18", 3 hp., asst. 16" & 18" aeration tubing
Avonlea centrifugal aeration fans, 7-1/2 hp.
Coldwell fan, 24", 7-1/2 hp.
Keho fan, 7-1/2 hp.

SCRAPER, BLADE & ROCKPICKER

Caterpillar 70 hyd. push-off scraper, 10 cu. yard, laser/GPS mast, 16.00-25 front tires, 21.00-24 rear tires, S/N1235-70
Landoll 1632RS pull-type blade, 16', 6-way, box ends, rear rock box, bolt-on cutting edge, 19L-16.1 tires, S/N12D140585
Rockpicker, automatic, hyd. lift, hyd. dump, 16.5L-16.1SL tires

SUV

2003 GMC Yukon XL, automatic, 4WD, leather, AM/FM/CD, 157,000 miles

TANKS

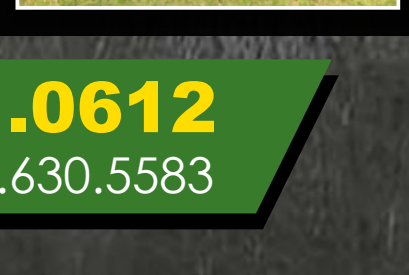
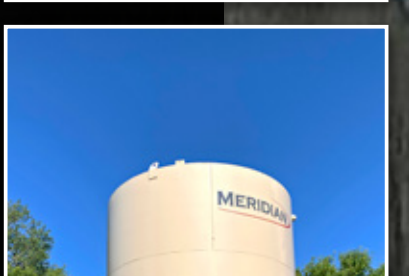
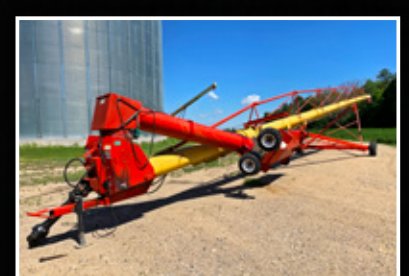
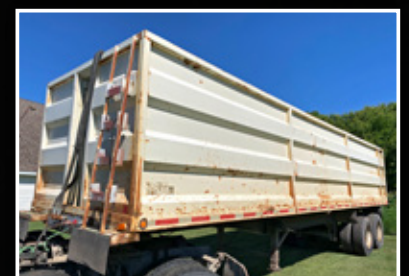
2012 Meridian 17,000 gal. fuel tank, single wall, 3/16" sidewalls, 1/4" bottom, 12" diameter, Fill-Rite 35 gpm pump w/auto shut-off handle, 110V, 1 phase, 2" outlet, 1-way fill valve
(2) 1,500 gal. poly tanks, 2" outlets
300 gal. fuel tank w/12v pump

TRACKS & TIRES

Soucy 12" tracks off sprayer, 10-hole rim off Fast sprayer
Armstrong tires, (1) 20.8-38, (1) 16.9-26
Goodyear tires: (4) 380/90R50, (2) 20.8-42, (4) 20.8-38, (2) 18.4-26, (2) 16.9-30
Goodyear 20.8-42 duals on band rims
(5) 14.9-38 tires on 9-hole rims, dual set
Michelin 14.00-20 construction tire
Misc. implement tires & used truck tires

PARTS

John Deere reel, 35', finger reel, off John Deere 635 head
Beet end gate off box truck
Sunflower pans for 24' head, w/reel & pans, end caps
(4) Plastic seed totes
U-tubing



DEAN SPAETH | Dean, 218.261.0612
 or Justin Ruth at [Steffes Group](http://SteffesGroup.com), 701.237.9173 or 701.630.5583

701.237.9173 | SteffesGroup.com
Steffes Group, Inc., 2000 Main Avenue East, West Fargo, ND 58078

TERMS: All items sold as is where is. Payment of cash or check must be made sale day before removal of items. Statements made auction day take precedence over all advertising. \$35 documentation fee applies to all titled vehicles. Titles will be mailed. Canadian buyers need a bank letter of credit to facilitate border transfer. Scott Steffes ND81, MN14-51; Brad Olstad ND319, MN14-70; Max Steffes ND999, MN14-031; Justin Ruth ND2019, MN14-041

